



Annual Review

2016–17 highlights

ANOTHER BUSY YEAR FOR CHESHIRE WILDLIFE TRUST

This year has seen our conservation and community engagement programmes grow, alongside increased support and recognition for our work.

To reverse the decline in nature we need society to care. This is why, during the year, we reached out to more people than ever

step into employment or further training through our Access course. We now have more than 1,000 volunteers who contributed over 12,644 hours this year – a huge contribution to making more space for nature. Our education programme grew too, reaching 4,000 children. You also got involved, with 154 attendees at our exclusive membership

“ We now have over 1,000 volunteers that contributed over 12,644 hours this year ”



before. Our natural environment is a vital asset on which our economy, health and future depends. This year we launched our health and well-being programme, demonstrating the power of nature to aid recovery from and prevent illness. We worked across the generations helping combat social isolation in older people through Great Outdoors Malpas, and supporting 275 young people in making a

events and over 200 people taking part in 30 Days Wild throughout June 2016. We also had a fantastic response to our reserves challenge appeal and several very generous gifts in Wills and in memory of a loved one.

Conservation at a landscape scale is at the heart of our work. This year we continued restoring the lost mosses of Delamere, securing the future for species

such as the green hairstreak butterfly and the white-faced darter dragonfly. Cheshire’s rivers often take centre stage in our projects, whether it’s managing local wildlife sites on the banks of the River Weaver, helping farmers improve water quality and natural flood management along the River Dane or making sure wetland birds have safe places to feed, roost and breed in the River Goway floodplain.

Our nature reserves are benefiting from habitat restoration and access improvement schemes supported by the reserves challenge appeal, grants and our corporate partners. Thanks to the support we’ve received there is now a new bird hide at Blakenhall Moss, a new trail through Owley Wood, 30 new bird boxes at Danes Moss and 6ha of fen restored at Bagmere, to name just a few of our achievements.

Thank you for your support over the last year. We have ambitious and exciting plans to do even more for Cheshire’s wildlife in the future and we can only do this with your continued support.

Charlotte Harris, Chief Executive

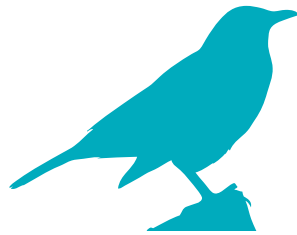


What a busy year

MAKING SPACE FOR NATURE



110 hectares of mossland habitat was restored at Delamere and six at Bagmere



Volunteers helped us to create **200 metres** of new hedgerow at Owley Wood



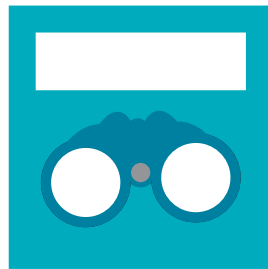
Population estimates of natterjack toads increased to a **record 32** at Red Rocks Marsh



30 new bird boxes have been installed in Danes Moss



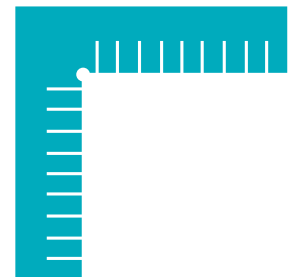
We have improved **319 metres** of pathways across Danes Moss, Swettenham Meadows and Owley Wood alone.



A **new bird hide** was built at Blakenhall Moss.



220 dormice boxes were surveyed.



313,600 square metres were managed as part of the Saltscape project.



Key meadow species grew successfully in Swettenham Meadows, following the scattering of green hay harvested from Dane-in-Shaw Pasture.

- ✓ We met twice with HS2 and sent two formal written responses to specific consultations.
- ✓ We responded to planning applications that covered approximately 266 hectares of semi-natural and priority habitats, Local Wildlife Sites and areas important for Birds of Conservation Concern.
- ✓ We advised Highways England on the M53 biodiversity plan. This advice was taken on board, saving a lot of habitat from damaging activities.
- ✓ Our work this year has helped to protect six major wildlife corridors from development.

HELPING PEOPLE TO ENJOY NATURE

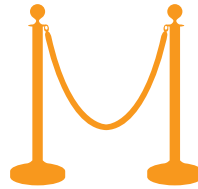
We engaged with **4,000** children, encouraging them to connect with nature. **Our members have...**



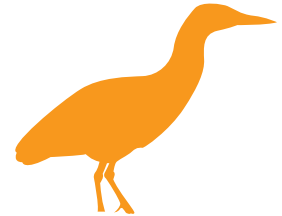
Taken DNA swabs from natterjack toads' mouths



Built bird boxes for our reserves and their gardens



Attended exclusive member only events, with 154 able to join us for the sessions



Tried to spot the elusive bitterns at Marbury Country Park

The Brightlife project saw 621 people over the age of 50 partake in 11 different activities including...



Identifying 86 species of birds



Walking 455 miles



Producing 13 jars of honey

Red Rocks Marsh appeared several times on *Made in Liverpool* and Danes Moss featured in *The Times*, as one of the best places to go in the spring to see reptiles in the UK.

SOUTHPORT

LIVERPOOL

CHESTER



Over 200 people took part in **30 Days Wild**, improving feelings of connectedness to nature for up to two months after it ended.

- ✓ We worked with universities including Manchester Metropolitan University, University of Chester, Liverpool John Mores University, The University of Liverpool and Lancaster University.
- ✓ 1405 volunteers gave 12,644 hours of their valuable time and skills. 275 of these also improved their employment skills at the same time, whilst 191 volunteered to help with their health and well-being.
- ✓ 95 people improved their practical conservation skills for free through Natural Futures' training programme.
- ✓ We worked with 34 groups all over the region, including our local groups
- ✓ 20 events were held to celebrate and promote the importance of our coast.

Financial Review

We'd like to say a big thank you to everybody who supports us. As a charitable organisation we couldn't do our work without you. We're really grateful to the thousands of individuals like you who regularly donate, as well as our grant funders, partners, corporate members and community groups.

These charts give an illustration of our income and expenditure for the year 2016–17. The full audited accounts and Trustees Report will be available from 27th September. You can obtain a copy by contacting Cheshire Wildlife Trust or from www.cheshirewildlifetrust.org.uk.

We are incredibly grateful to those who left a legacy to the Trust, or made in memoriam donations, including Miss Rosemary Eve Fox and Audrey Eloise Mayer Oakes. These totalled £124,73.37

Funders

- Age UK
- Barclays
- Brightlife
- Cheshire Community Foundation
- Cheshire West & Chester Council
- Compass Minerals
- Defra
- Environment Agency
- FCC Environmental
- Heritage Lottery Fund
- Lord Leverhulme's Charitable Trust
- Natural England
- Royal Botanic Gardens Kew
- Tesco Bags of Help
- The D'Oyly Carte Charitable Trust
- United Utilities
- Vine House Farm
- WREN

Partners

- Bristol-Myers Squibb
- British Dragonfly Society
- Brookhouse Allotment Volunteers
- Care 4ce
- Cheshire East Council
- Chester Zoo
- Conservation Volunteers
- Dee Estuary Voluntary Wardens
- Forestry Commission
- Groundwork UK
- JobCentre Plus
- Manchester Metropolitan University
- MAN Diesel & Turbo UK Ltd
- National Citizenship Service
- Norley Wildlife Group
- Phoenix Futures
- Pure Innovations
- Ramboll
- Reaseheath College
- RSPB
- Sandstone Ridge Trust
- Stockport Council
- University of Chester
- West Cheshire College
- Wirral Council

Corporate Members

- Bathgate Silica
- Befesa
- Booths
- Carillion Rail
- Chester Golf Club
- Custom Powders
- Eaton Golf Club
- EMS
- Essar
- HW Coates
- Imerys PCC UK Ltd (Solvay)
- Impact Solutions
- INOVYN ChlorVinyls Ltd
- Lafarge
- MAN Diesel
- Man United
- Manchester Airport
- MBNA
- Sanofi
- Sibelco
- SSE
- The Emerson Foundation
- URENCO
- Wienerberger

