

Cheshire's butterflies

There are 59 species of butterflies in the UK but not all are found in Cheshire. Some prefer the warmth of the south; some need the cool of the north and others need special habitats. It's possible to spot other butterflies from time-to-time, but these are the ones that call Cheshire home.



Cheshire Wildlife Trust

- Very Common
- Common
- Rare locally
- Rare nationally
- Very rare nationally

Speckled Wood



Small Tortoiseshell



Peacock



Meadow Brown



Gatekeeper



Red Admiral



Green-veined White



Large White



Small White



Orange Tip



Brimstone



Small Skipper



Painted Lady



Holly Blue



Large Skipper



Common Blue



Small Copper



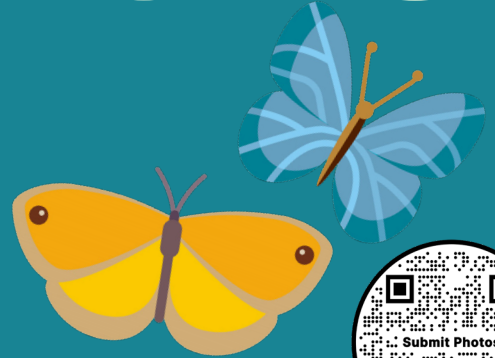
Ringlet



Small Heath



Purple Hairstreak



Green Hairstreak



White-letter Hairstreak



Wall



Grayling



Dingy Skipper




Comma



If you spot a butterfly, take a photo and submit it via the iNaturalist app. The sighting will be picked up by the local record centre and used to help monitor butterflies.

Butterflies look different with their wings closed



Caterpillars are fussy eaters. This  symbol tells you one of the caterpillar foods you can grow to give that butterfly a home. The more of these plants you grow, the more of these butterflies you are likely to see.

Speckled Wood



Common couch grass

Small Tortoiseshell



Small nettle

Peacock



Common nettle

Meadow Brown



Meadow grass

Gatekeeper



Bent grass

Red Admiral



Common nettle

Green-veined White



Garlic mustard

Large White



Cabbage

Small White



Nasturtium

Orange Tip



Cuckooflower

Brimstone



Buckthorn tree

Small Skipper



Yorkshire fog grass

Painted Lady



Thistle

Holly Blue



Holly and ivy

Large Skipper



Cock's-foot grass

Common Blue



Bird's-foot-trefoil

Small Copper



Common sorrel

Ringlet



False broome grass

Small Heath



Fescue grasses

Purple Hairstreak



Oak tree

Green Hairstreak



Bird's-foot-trefoil

White-letter Hairstreak



Elm tree

Wall



Yorkshire fog grass

Grayling



Sheep's fescue grass

Dingy skipper



Bird's-foot-trefoil

Comma



Common nettle

Food for thought

The small-pearl-bordered fritillary became extinct in Cheshire in the 2010's. It's extremely sad to have lost one of our resident butterflies but it highlights the challenge butterflies are facing as more wild spaces are lost. Cheshire Wildlife Trust are working to ensure 30% of land is managed for nature by 2030. You can help be a part of that by giving butterflies a home in whatever space you have.

